



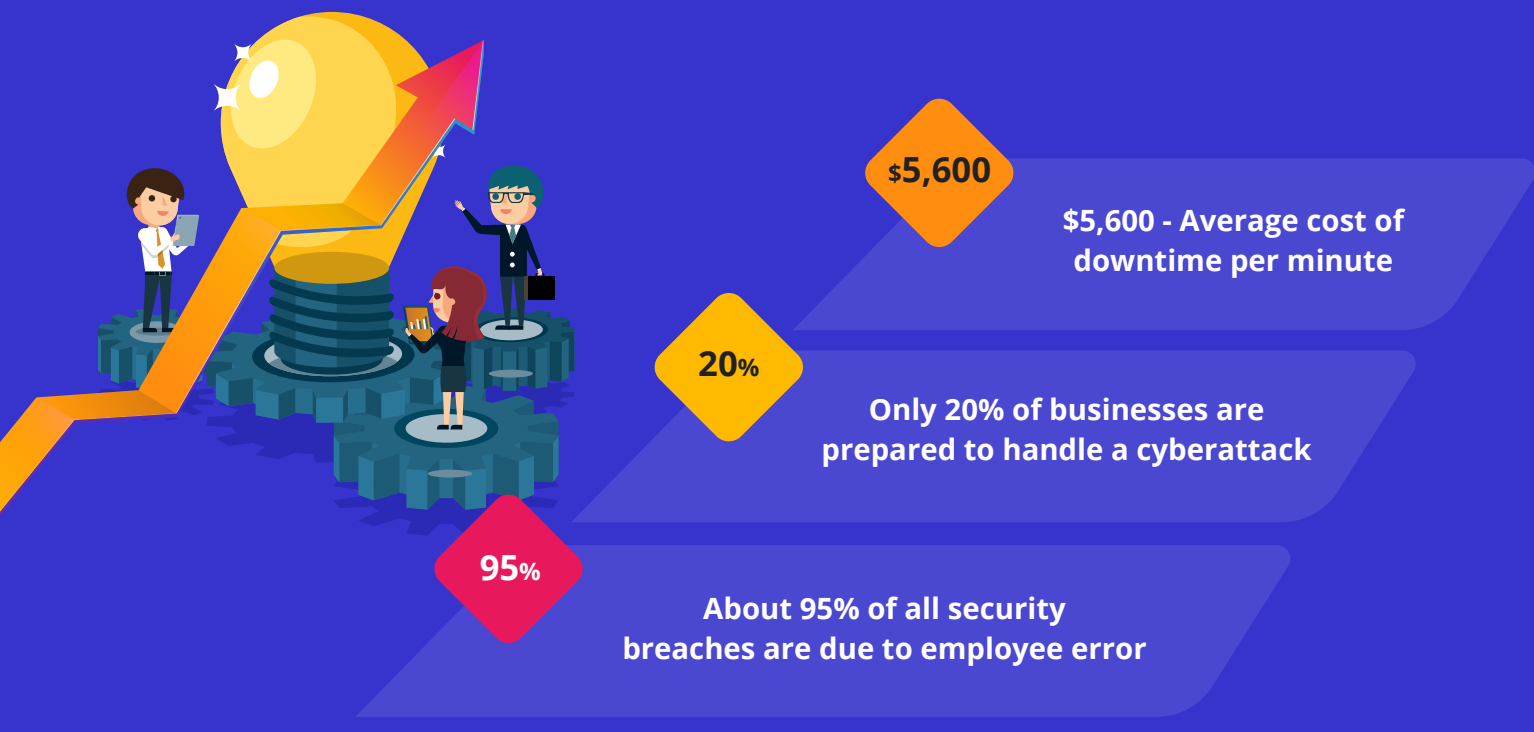
# PROTECT FROM ISSUES BEFORE THEY HAPPEN - HOW CONTINUAL MONITORING CAN WORK FOR YOU

## WHY YOUR ENTIRE IT INFRASTRUCTURE NEEDS TO BE MONITORED 24/7

If there's one thing we can agree on, it's that the cyberthreat landscape is constantly evolving. Our technicians are always on the watch, monitoring each device for performance issues, hard drives near capacity, abnormal behavior, and signs of viruses or cybercriminals.

Constant monitoring offers an array of benefits for your business, but most importantly, it gives you peace of mind knowing that you'll receive real-time alerts on any discrepancies or potential issues with your networks before they get out of hand.

## DOWNTIME CAN BE COSTLY



### THE COMPLETE VISIBILITY THAT YOU NEED



It can be challenging to constantly scan every single part of your IT infrastructure. However, with an MSP (managed service provider) like us on board, you will have our technicians keeping a constant eye on all devices in your entire network. This visibility into your network makes it easier to monitor changes or anything out of place, protecting you from unauthorized changes.

### LEVERAGING REAL-TIME ALERTS AND AUTOMATION

With real-time alerts, our technicians can be alerted to issues before they turn into major problems. Automatic workflows also allow us to automatically resolve issues as soon as they arise, regardless of whether our technicians are on-site or not. These workflows are specifically designed by us to fix common issues in your environment, allowing our technicians to respond faster and resolve issues — often before your users can even notice them — so that they don't become larger problems.



### UP-TO-DATE PATCHING



Patching is a key factor in both software and hardware security. They are designed to repair vulnerabilities and other issues after software is rolled out. Vendors are constantly rolling out patches for their software and if these patches are not installed quickly and properly, your systems will be vulnerable to various cyberthreats out there. Did you know that 74% of companies can't patch fast enough due to a lack of staff?

As your MSP, we will ensure that all your patches are installed promptly and completely, without you having to worry about it.

### WE'RE JUST A CLICK AWAY, ALWAYS

Get the help you need when you need it by giving your staff rapid access to technicians with the right know how and resources to fix their specific problems. Instant chat with our technicians via web, text and WhatsApp to ensure that their issues are resolved quickly, with as little downtime as possible.



## 31 HOURS PER WEEK LOST DUE TO INTERRUPTIONS



BENEFITS OF MANAGED IT SERVICES

424 Peninsula Blvd. Lynbrook NY 11563

Call Today: 800-270-9321

[HTTPS://BETTERTECH.US](https://bettertech.us)